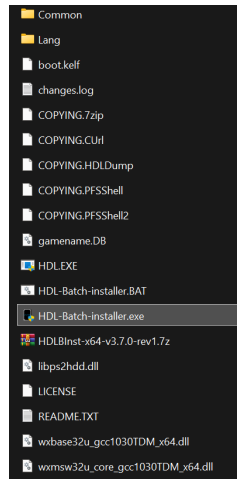
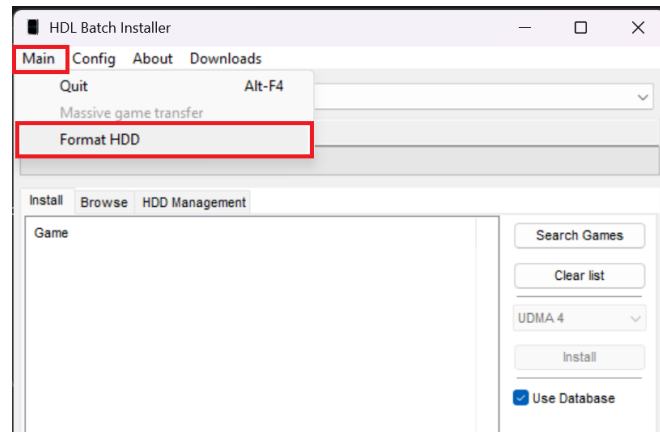


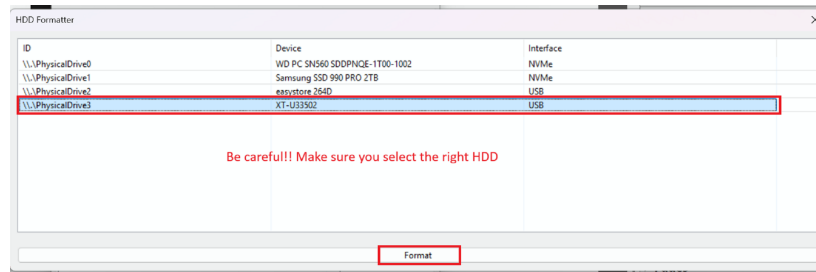
1. Connect HDD to your PC via USB
2. Open HDL Batch Installer



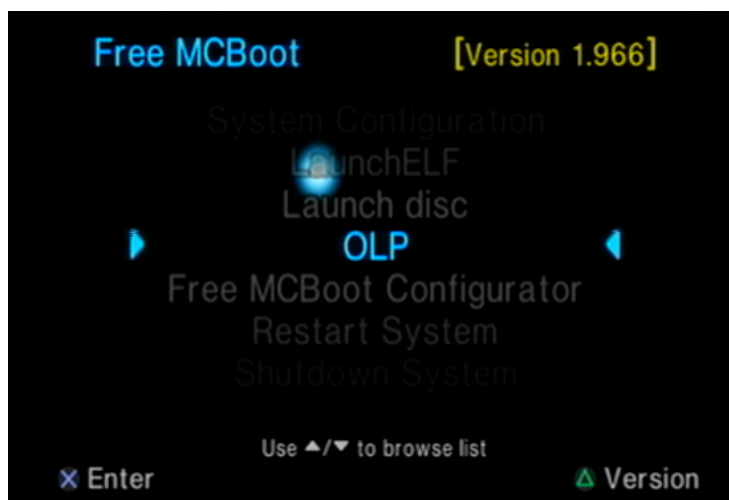
3. Format HDD for PS2



4. Click "Format" and hit "OK" (a bunch of times, software wants you to be sure this is the HDD you want to format).



5. Eject the HDD from PC
6. Put the HDD into PS2
7. Open OPL



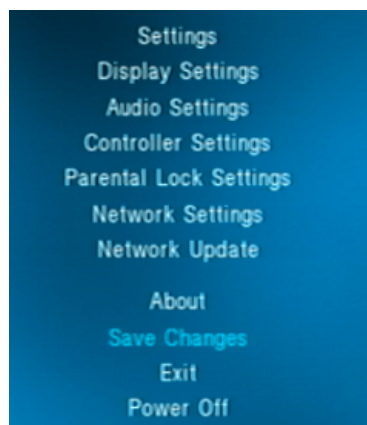
8. You should hear the fan get louder . This is what a PS2 does when a HDD is being used.
9. OPL Settings page will appear. Change HDD Device Start Mode to "Auto".



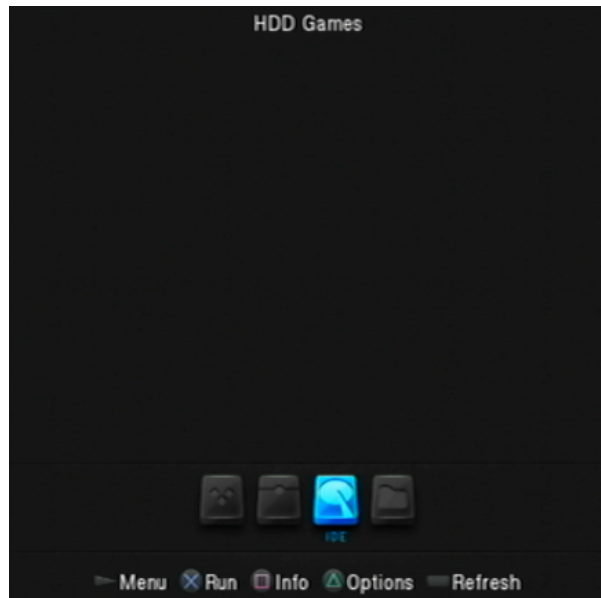
10. Change Default Menu to "HDD Games" then click "OK".



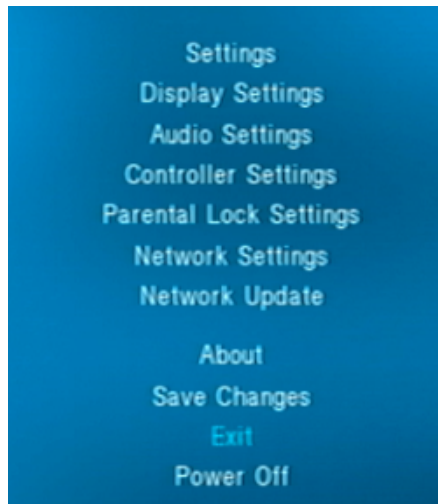
11. You should be back to the main OPL settings page. Click "Save Changes".



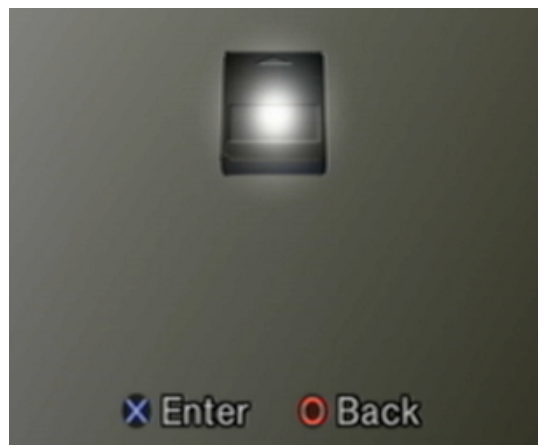
12. Push the circle button to go to the Games List screen. It will be empty.

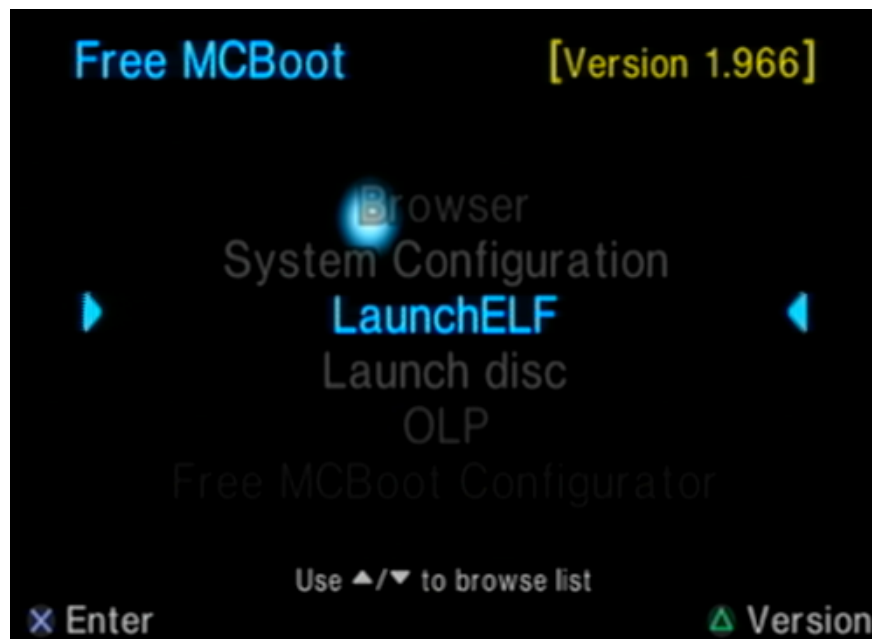


13. Push the Start button to go back to the settings menu. Choose "Exit" and "Exit to Broser".

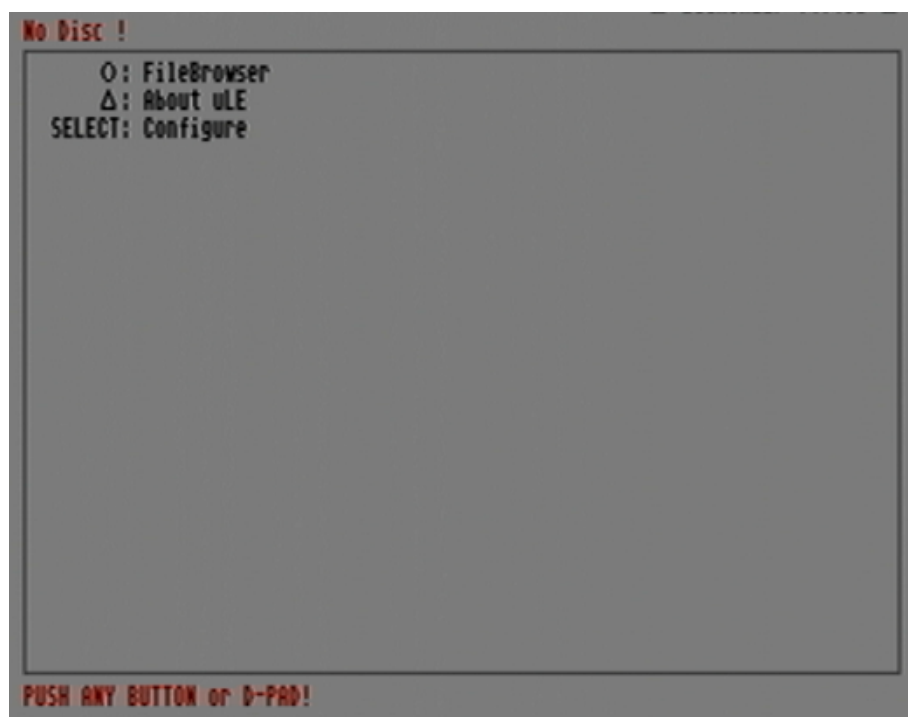


14. Press the circle button to go back to the FreeMcBoot menu.





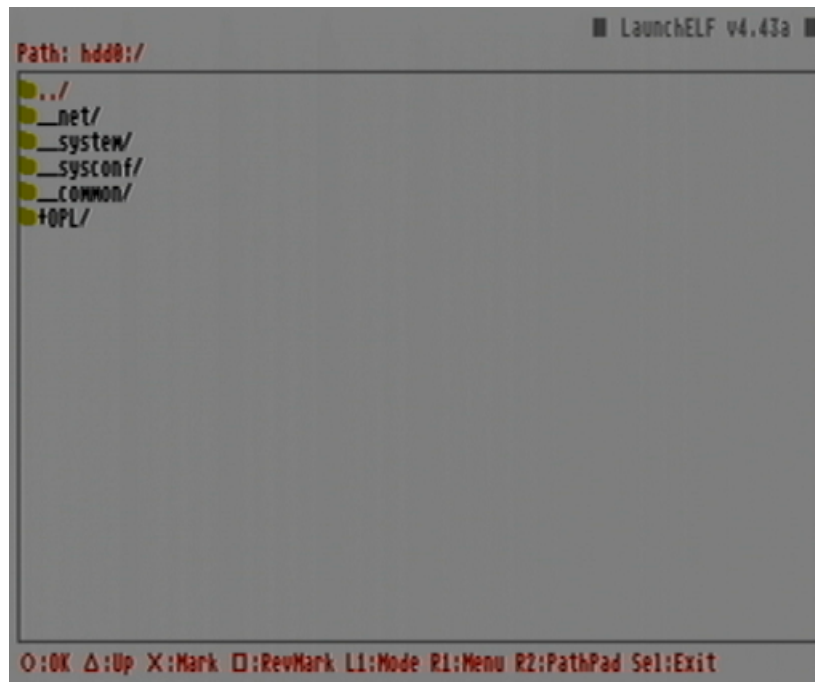
16. Press the circle button to open File Browser.



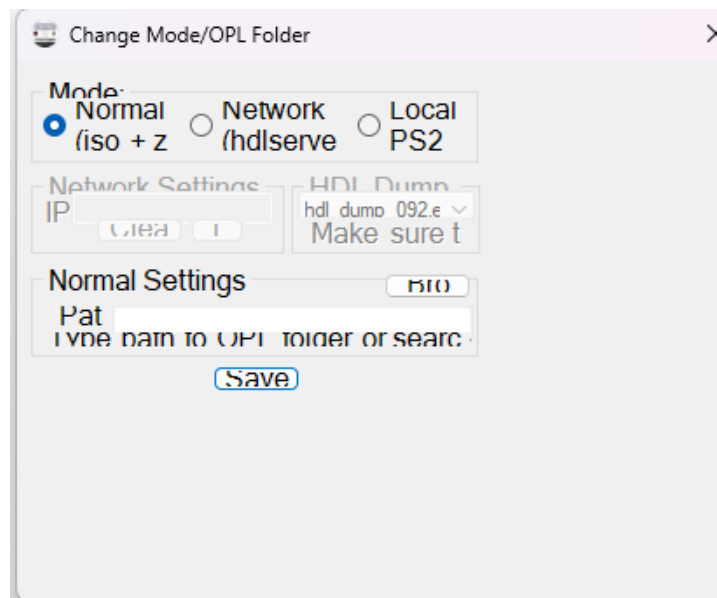
17. Press the circle button on "hdd0:/"



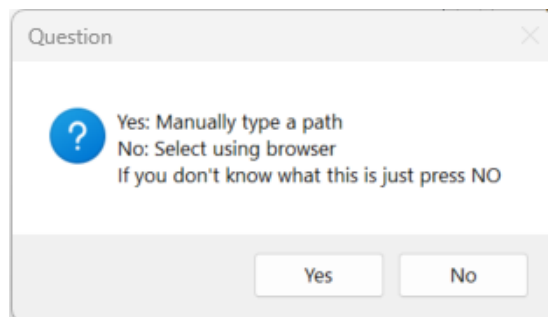
18. You should see that OPL has set up all of the required folders and files .



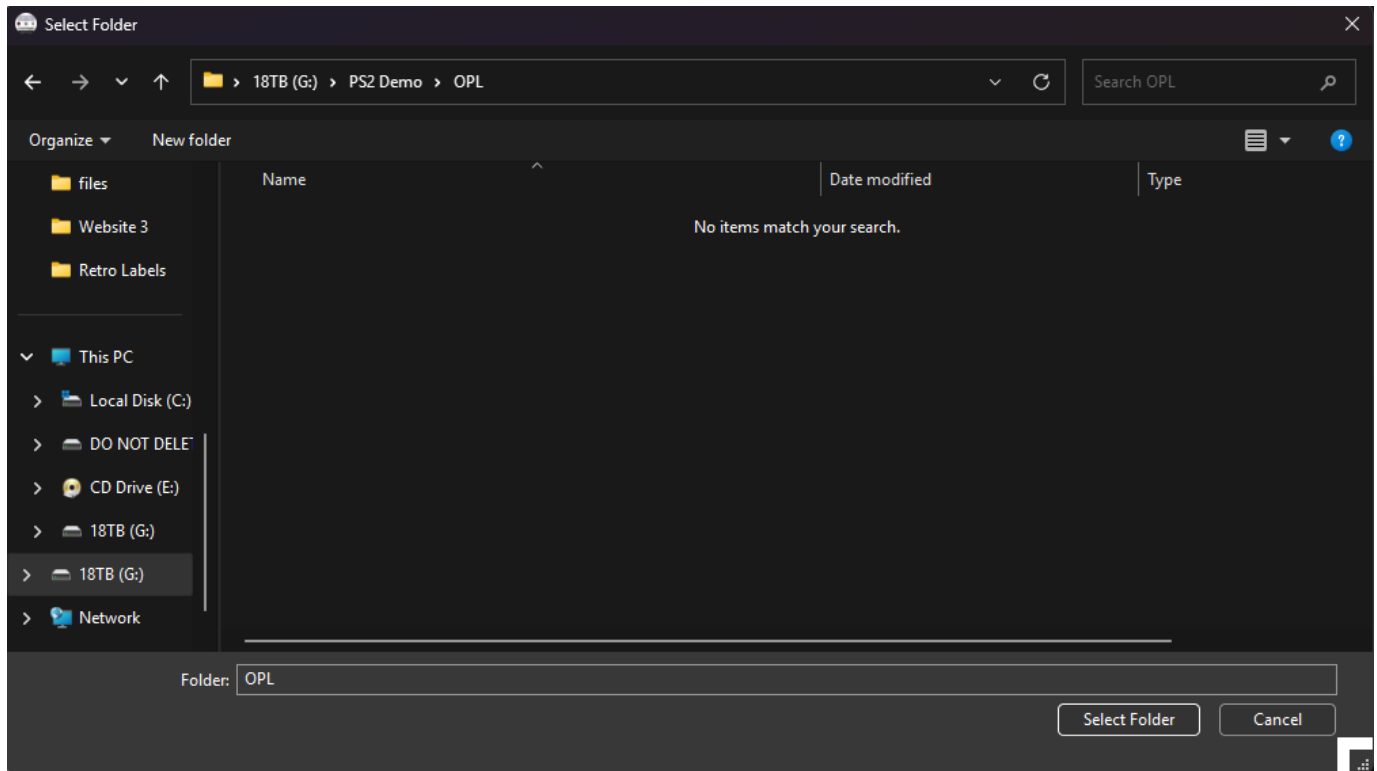
19. Turn off PS2 and plug the HDD back into your PC via USB.
20. Open OPL Manager
21. Choose Normal Mode and click "Save"



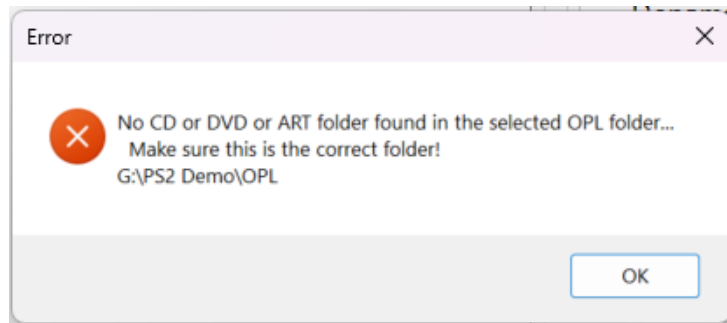
22. Set up a path for your OPL files. Choose "No".



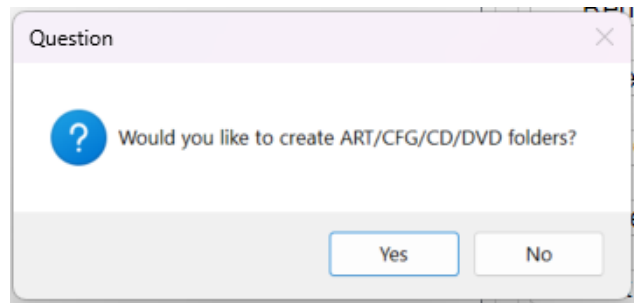
23. Find a location on your PC that you would like OPL Manager to use to organize your files. Then click "Select Folder"



23. Click "OK".



24. Click "Yes".



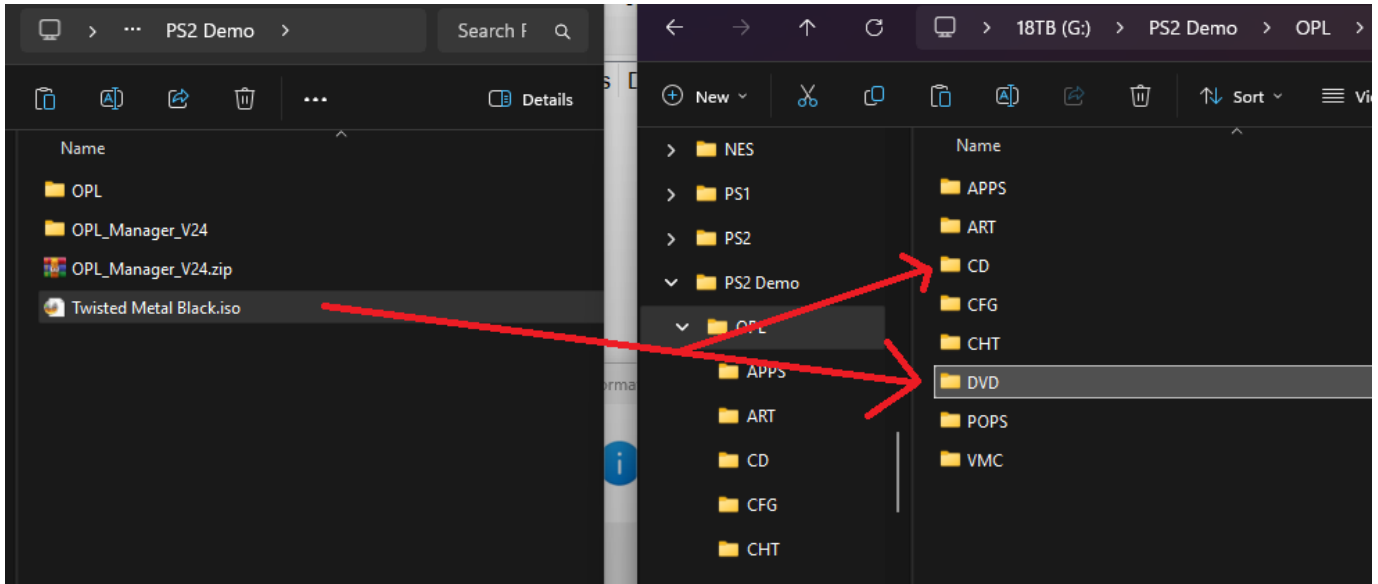
25. You should now be at an empty OPL Manager home screen. Close OPL.

26. Move your ISO files into the folders OPL Manager is using to organize your games.

Use the DVD folder for games that were released on DVD.

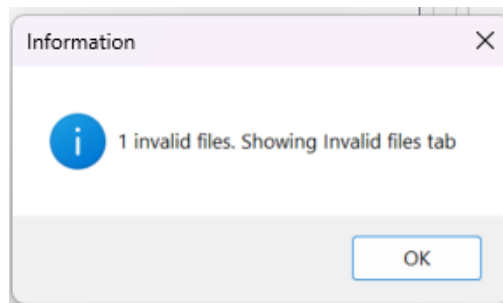
Use the CD folder for games that were released on.

If the ISO is 700MB or less, 99% chance it was released on CD.



27. After you have put your ISO files into the DVD and CD folders. Open OPL Manager.

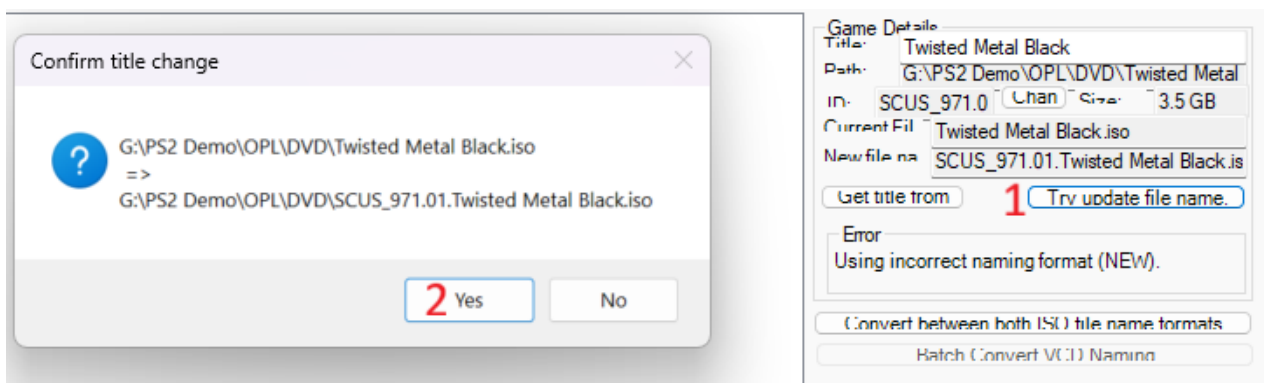
You should see a window about Invalid Files. Click "OK"



28. OPL Manager will bring you to an "Invalid Files" tab.

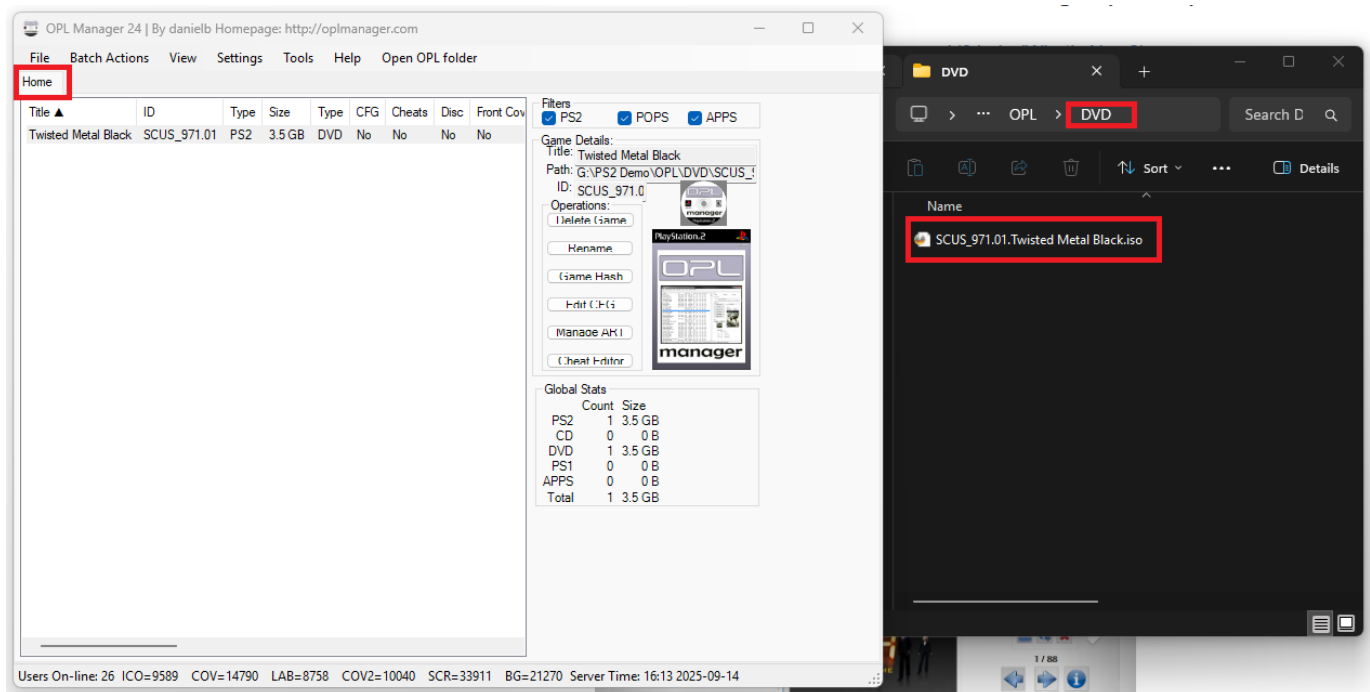
28-1. Click "Try update file name"

28-2. Click "OK"



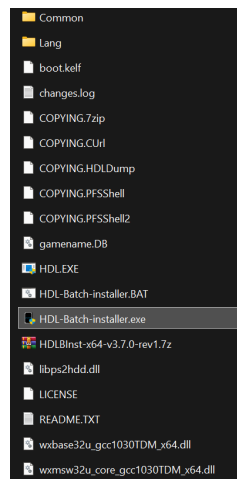
29. The Invalid Files tab in OPL Manager should be gone now with only a Home tab remaining.

You should also see the ISO file has been renamed to the proper format in the DVD folder OPL Manager is using to organize your games.

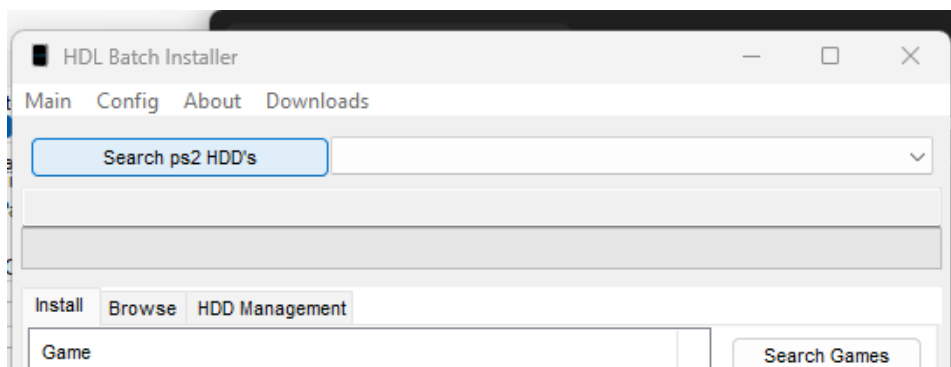


30. After you have successfully renamed all of your ISO game files, close OPL Manager.

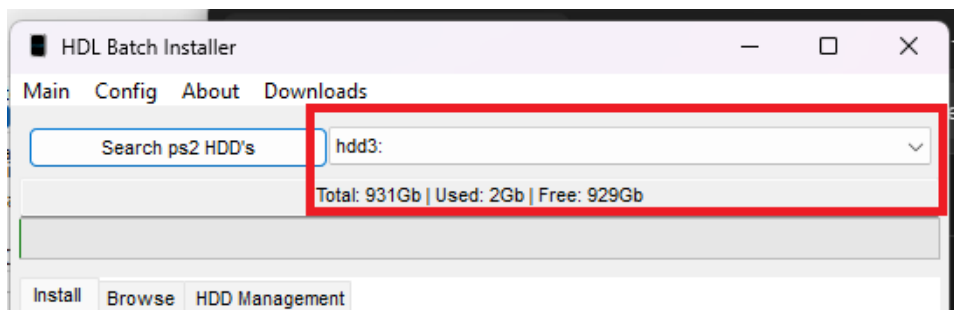
31. Open HDL Batch Installer



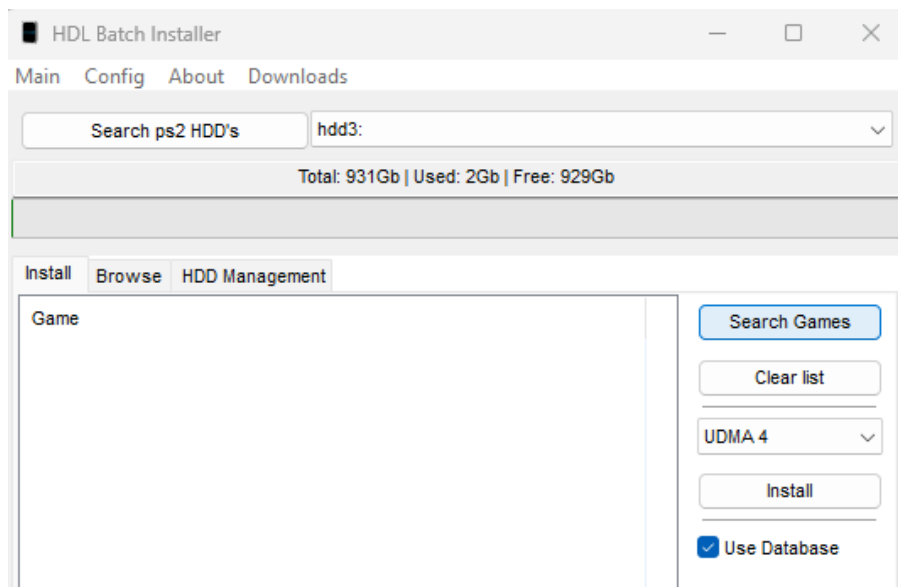
32. Click on "Search ps2 HDD's"



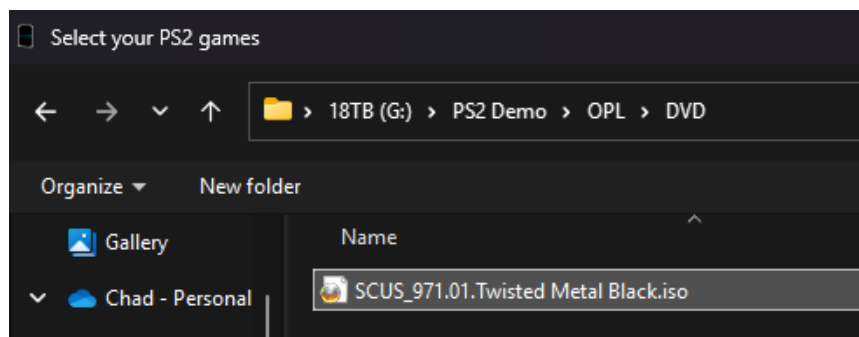
33. Your PS2 formatted HDD should appear.



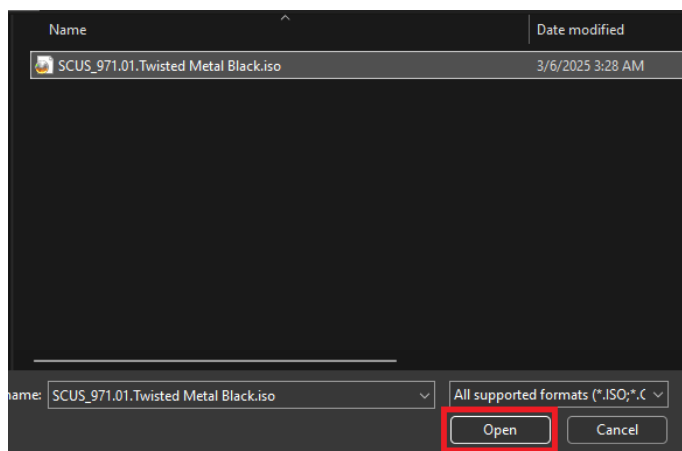
34. Click on "Search Games"



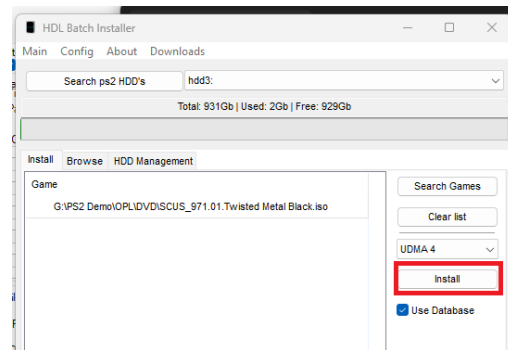
35. Navigate to the folders that you've set up for OPL Manager. Go into the DVD or CD folder and select the ISO file(s) you want to install to the PS2 HDD.



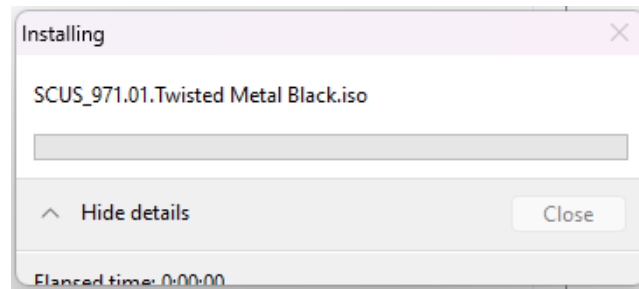
36. Once the ISO file(s) are selected, click on "Open".



37. Click "Install".



38. The ISO file(s) will now be installed to the PS2 HDD.



39. After the installation is complete. Close HDL Batch Installer, eject the PS2 HDD from your PC and put the PS2 HDD back into your PS2. Now, turn on your PS2.

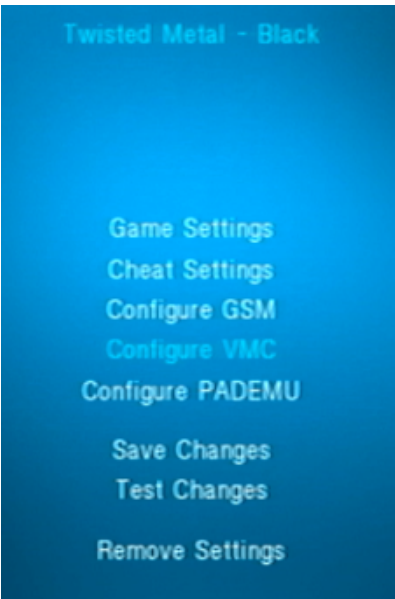
40. Open OPL on your PS2.



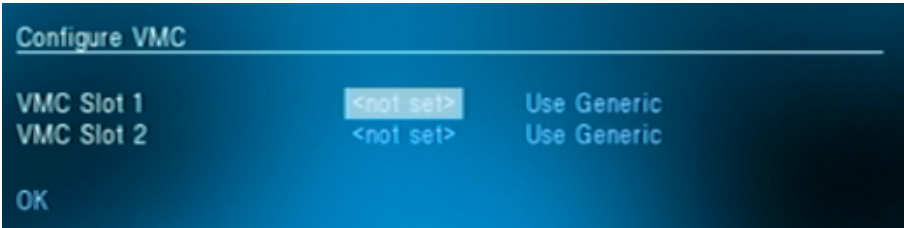
41. Your game(s) should now be visible in the OPL game list.



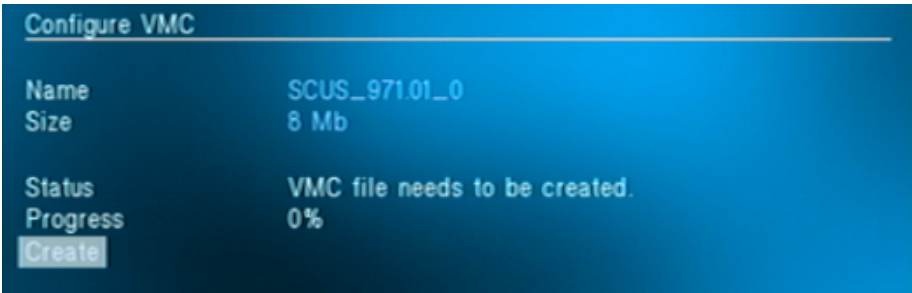
42. Highlight the game you want to play and push the triangle button.
Select "Configure VMC".



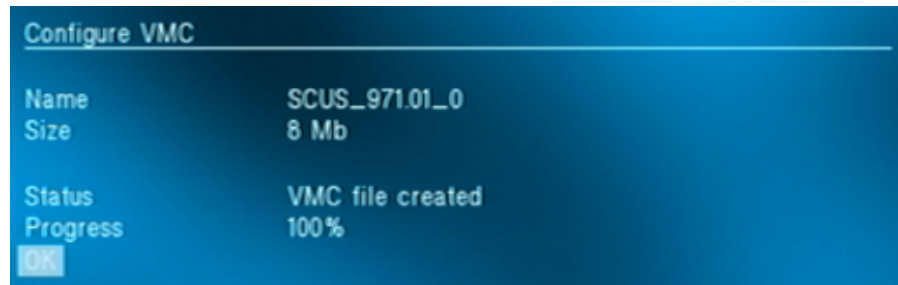
43. Click the X button on VMC Slot 1 <not set>.



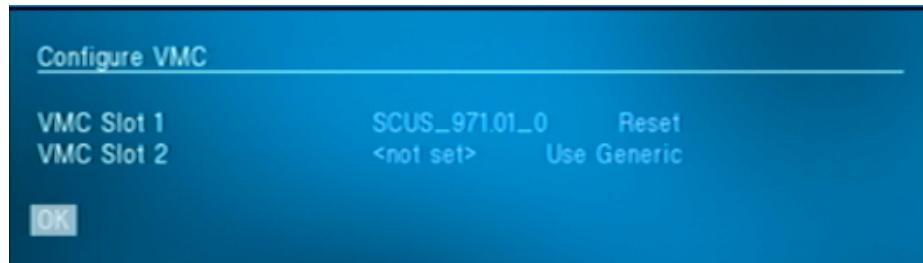
44. Push the down button twice and select "Create".



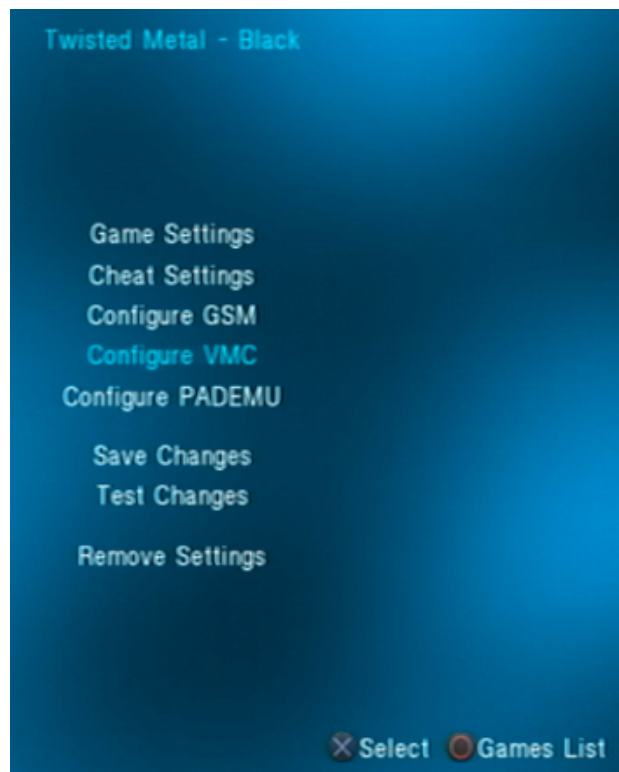
45. In less than two seconds, a virtual memory card (VMC) will be created for the game you have chosen.
Push the X button on "OK".



46. Push the down button twice, and select "OK".



47. Push the circle button to go back to the games list.



Steps 42 to 47 must be performed every time you launch a game for the first time so you have a VMC to save your game progress to.

48. Select the game you would like to play from the list in OPL. Push the X button to run the game.

